

Madison, Wisconsin

CITY OF MADISON

CITY ENGINEERING DIVISION

DEPARTMENT OF PUBLIC WORKS

PLAN OF PROPOSED IMPROVEMENT

PUBLIC IMPROVEMENT PROJECT APPROVED

JUNE 5, 2018

BY THE COMMON COUNCIL OF MADISON, WISCONSIN

PUBLIC IMPROVEMENT DESIGN APPROVED BY:

[Signature] 6/29/18
City Engineer Date

INDEX OF SHEETS

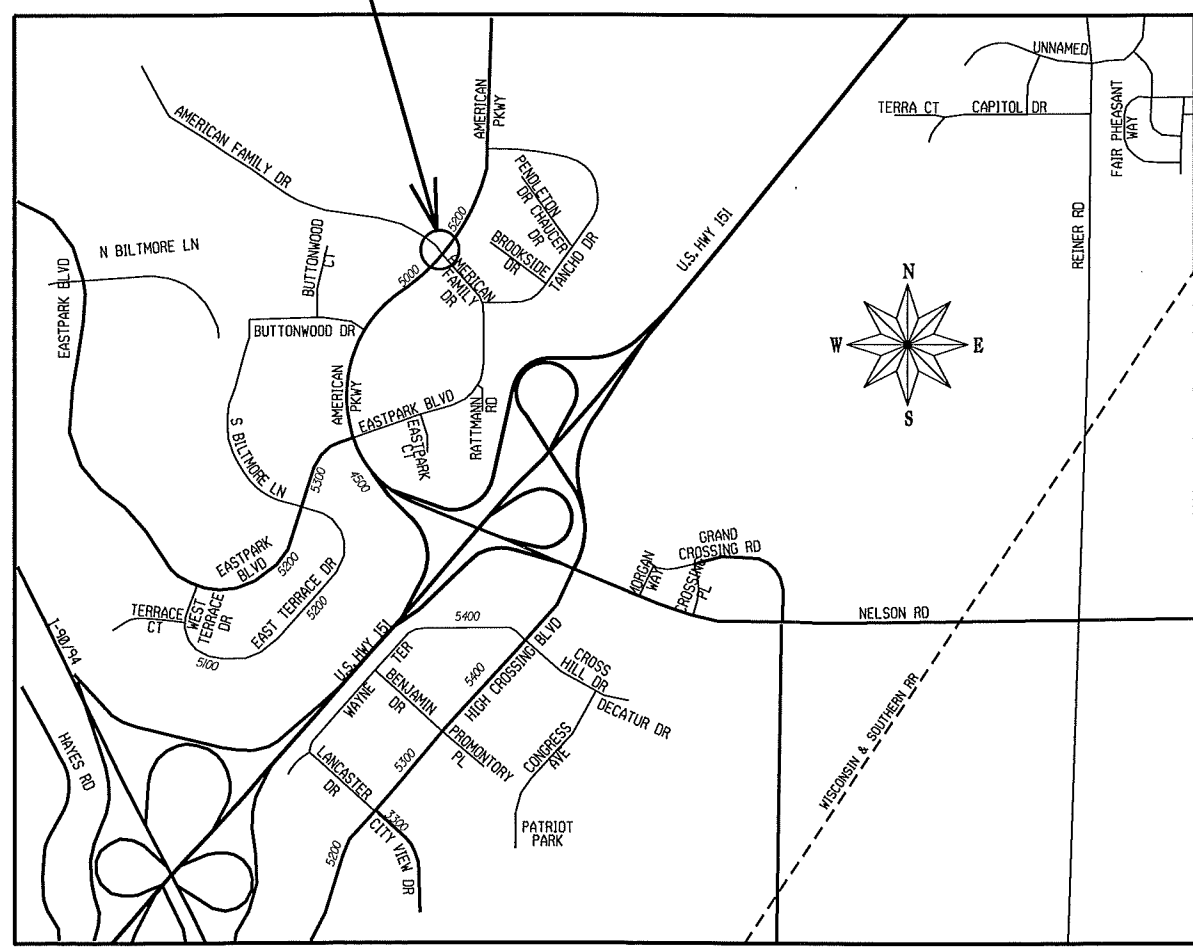
SHEET NO.	TITLE
1	SIDEWALK & STREET PLAN
P-1	ELECTRICAL PLAN
E1 - E9	PERMANENT PAVEMENT MARKINGS

AMERICAN PARKWAY & AMERICAN FAMILY DRIVE TRAFFIC SIGNAL ASSESSMENT DISTRICT

CITY PROJECT NO. 45865
CONTRACT NO. 8216

PROJECT LOCATION

CONVENTIONAL SIGNS	
FIELD VERIFY ALL UTILITY LOCATIONS	
GAS	— G —
STORM SEWER	— ST —
SANITARY SEWER	— SAN —
WATER	— W —
BURIED ELECTRIC	— E —
OVERHEAD ELECTRIC	— OH —
POWER POLE	
ADA COMPLIANT RAMP W/ DETECTABLE WARNING FIELD	
COMBUSTIBLE FLUIDS	



NOTES:

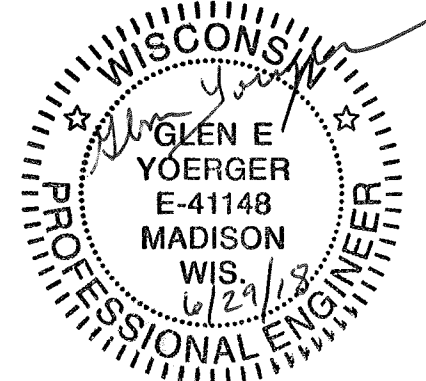
ALL GUTTERS SHALL DRAIN WITH A MINIMUM GRADE OF 0.50% TOWARD STORM SEWER INLETS.

SIDEWALK RAMPS AND CURB THRU SIDEWALK RAMPS SHALL HAVE A MAXIMUM SLOPE OF 1" PER 12". SIDEWALK AND CURB RAMPS SHALL BE CONSTRUCTED WITH A SIDE SLOPE OF 1.50%. SIDEWALK SHALL HAVE A MINIMUM LONGITUDINAL SLOPE OF 0.50% AND A MAXIMUM LONGITUDINAL SLOPE OF 5.00% EXCEPT WHERE STREET GRADES EXCEED 5.00%.

EARTH WORK SUMMARY:

EXCAVATION CUT (MEASURED PLAN QUANTITY) 118 C.Y.
ESTIMATED UNDISTRIBUTED UNDERCUT 20 C.Y.
TOTAL UNCLASSIFIED EXCAVATION CUT 138 C.Y.

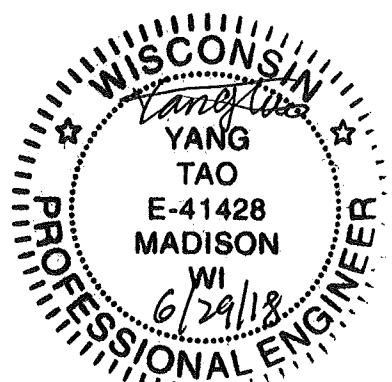
SIDEWALK GRADES DESIGNED BY:



ELECTRICAL DESIGNED BY:



PAVEMENT MARKINGS DESIGNED BY:

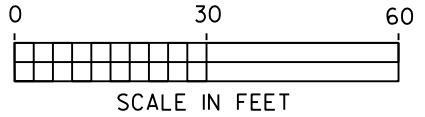
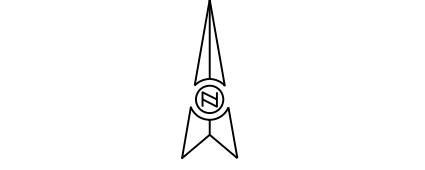


PLOT SCALE:

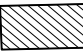
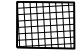



PLOT NAME:

REV. DATE:

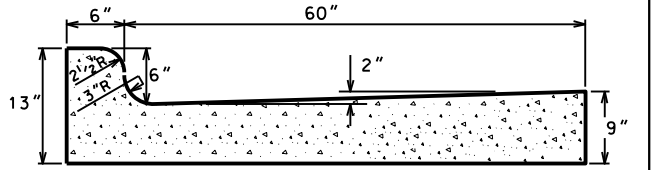
ORIGINATOR: CITY OF MADISON, STREETS DIVISION



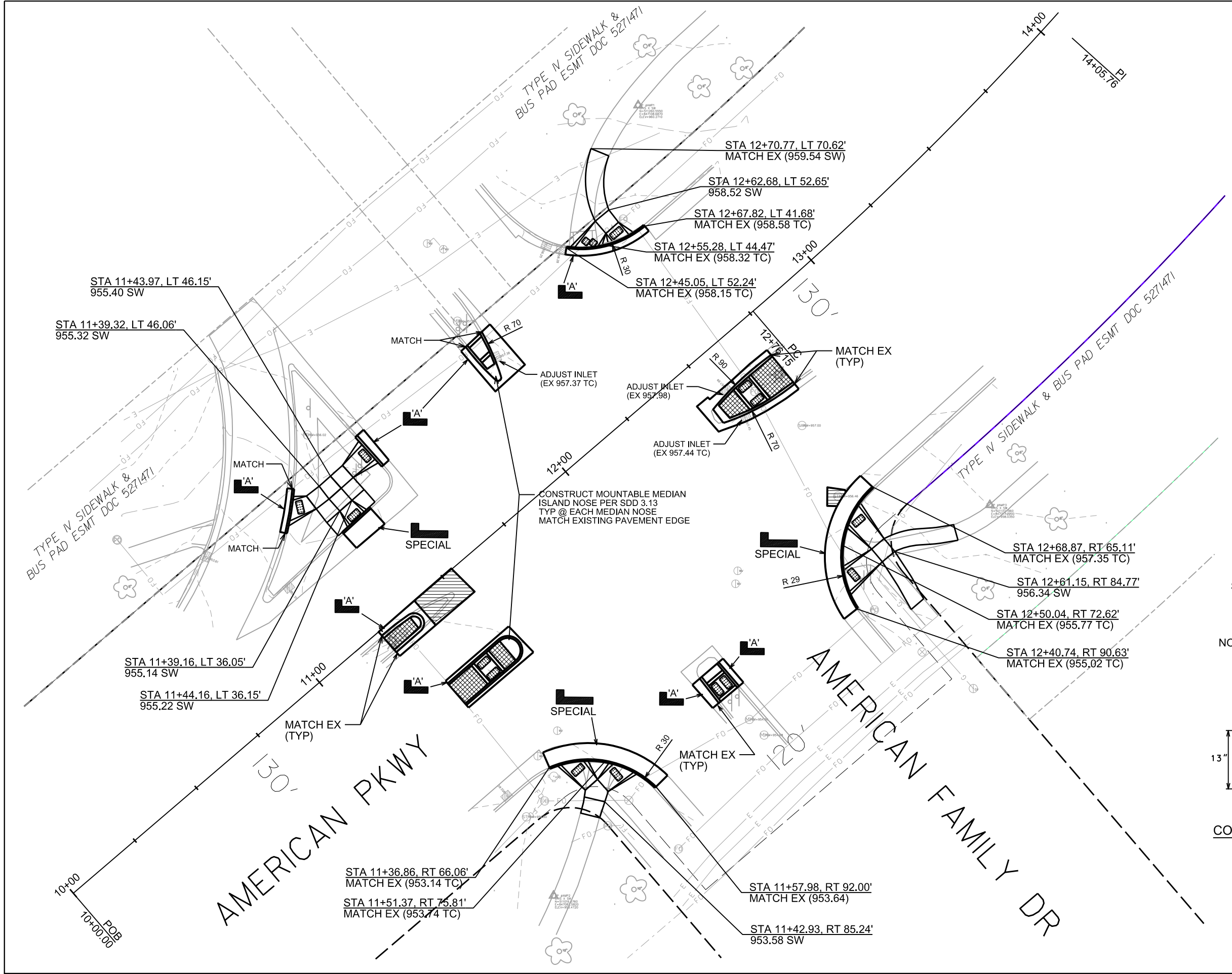
LEGEND

-  RECONSTRUCT CONCRETE PAVEMENT, REMOVE & REPLACE PER S.D.D. 3.10 AND S.D.D. 3.11
-  5-INCH STAMPED, COLORED CONCRETE SEE SPECIAL PROVISIONS
-  CURB RAMP DETECTABLE WARNING FIELD (SEE S.D.D. 3.03)
-  TYPE 'A' CONCRETE CURB & GUTTER (REMOVE & REPLACE) MATCH EXISTING CROSS SECTION & GRADES UNLESS SHOWN OTHERWISE
-  CONCRETE CURB & GUTTER SPECIAL, 66 INCH SPECIAL (REMOVE & REPLACE) MATCH EXISTING CROSS SECTION & GRADES UNLESS SHOWN OTHERWISE

- NOTES: 1) EXISTING CONCRETE PAVEMENT IS 9-INCH
 2) ALL SIDEWALK REPLACED SHALL BE CONCRETE SIDEWALK 7-INCH.



CONCRETE CURB & GUTTER SPECIAL, 66-INCH
 NOT TO SCALE



PLOT SCALE:
 PLOT NAME:
 REV. DATE:

ORIGINATOR: CITY OF MADISON, STREETS DIVISION

GENERAL ELECTRIC NOTES:

1. ALL LOCATIONS ARE APPROXIMATE, THE TRAFFIC ENGINEER SHALL APPROVE FINAL LOCATIONS, INCLUDING SETBACK, IN THE FIELD AFTER CONTRACTOR SURVEYS STAKING. THE CONTRACTOR SHALL NOTIFY JERRY SCHIPPA (608 267-1969) CITY TRAFFIC ENGINEERING, AT LEAST 24-HOURS IN ADVANCE OF NEEDING CONDUIT OR BASE LOCATIONS MARKED.
2. BASES INSTALLED IN TERRACE SHALL BE 4' FROM FACE OF CURB UNLESS OTHERWISE NOTED, SUBJECT TO NOTE 1 ABOVE.
3. THE CONTRACTOR SHALL DO ALL WORK IN ACCORDANCE WITH "CITY OF MADISON STANDARD SPECIFICATIONS FOR PUBLIC WORKS CONSTRUCTION, 2018 EDITION" AND ALL ADDENDUMS THERETO. ALL CONDUIT SHALL BE PVC, SCHEDULE 80 UNDER PAVEMENT OR SCHEDULE 40 OTHERWISE. PULL WIRE REQUIRED AS PER STANDARD SPECIFICATIONS.
4. THE CONTRACTOR SHALL CALL TROY VANT (608 266-9031) AT THE TRAFFIC ENGINEERING SHOP AT LEAST 24-HOURS IN ADVANCE OF POURING BASES, INSTALLING HANDHOLES OR BURYING CONDUIT TO ARRANGE FOR INSPECTION.
5. ANY WORK COMPLETED WITHOUT INSPECTION IS SUBJECT TO REJECTION.
6. EXISTING STREETLIGHTS SHALL BE IN SERVICE EACH AND EVERY NIGHT.
7. TRAVEL LANE CLOSURES SHALL ONLY OCCUR ON WEEKDAYS BETWEEN 9:00 AM AND 4:00 PM AND ANYTIME ON WEEKENDS. ALL LANE CLOSURES OF AMERICAN PARKWAY SHALL REQUIRE AN ELECTRONIC, FLASHING ARROWBOARD. FLASHING ARROWBOARD COST INCLUDED IN BID ITEM 10701 TRAFFIC CONTROL.
- 8 ALL SIGNING AND BARRICADING SHALL CONFORM WITH THE FEDERAL HIGHWAYS ADMINISTRATIONS "MANUAL ON UNIFORM TRAFFIC CONTROL DEVICES" (MUTCD) AND THE CITY OF MADISON STANDARD SPECIFICATIONS FOR SIDEWALK AND BIKEWAY CLOSURES AND THE STATE OF WISCONSIN STANDARD DETAIL DRAWING S.D.D. 1503.
9. THE CONTRACTOR SHALL ARRANGE FOR PICK UP OF THE FOLLOWING CITY FURNISHED MATERIALS, WHICH SHOULD BE ARRANGED FOR PICKUP BY CALLING DENNIS ROWE, TRAFFIC ENGINEERING SHOP, (608 266-9034) 1120 SAYLE ST., AT LEAST 24-HOURS PRIOR TO NEEDING MATERIALS:
 - (16) 1 1/4" X 48" ANCHOR BOLTS
 - (12) 1" X 40" ANCHOR BOLTS
 - (12) 3/4" X 19" ANCHOR BOLTS
10. THE CONTRACTOR SHALL PROVIDE ANCHOR BOLTS FOR TYPE 10 BASES.
11. THE CONTRACTOR SHALL COORDINATE WITH TROY VANT, TRAFFIC ENGINEERING SHOP (608 266-9031) PRIOR TO REMOVING BASES OR HANDHOLES. EXISTING FIBER OPTIC CONDUIT SHALL BE MAINTAINED DURING CONSTRUCTION. EXISTING FIBER IS LOCATED IN THE AMERICAN PARKWAY MEDIAN, CROSSING THE EB LANES OF AMERICAN PARKWAY, CROSSING THE NB LANES OF AMERICAN FAMILY DRIVE, CROSSING AMERICAN PARKWAY, AND CONTINUING EAST ALONG THE NORTH TERRACE OF AMERICAN PARKWAY.

PLOT SCALE:

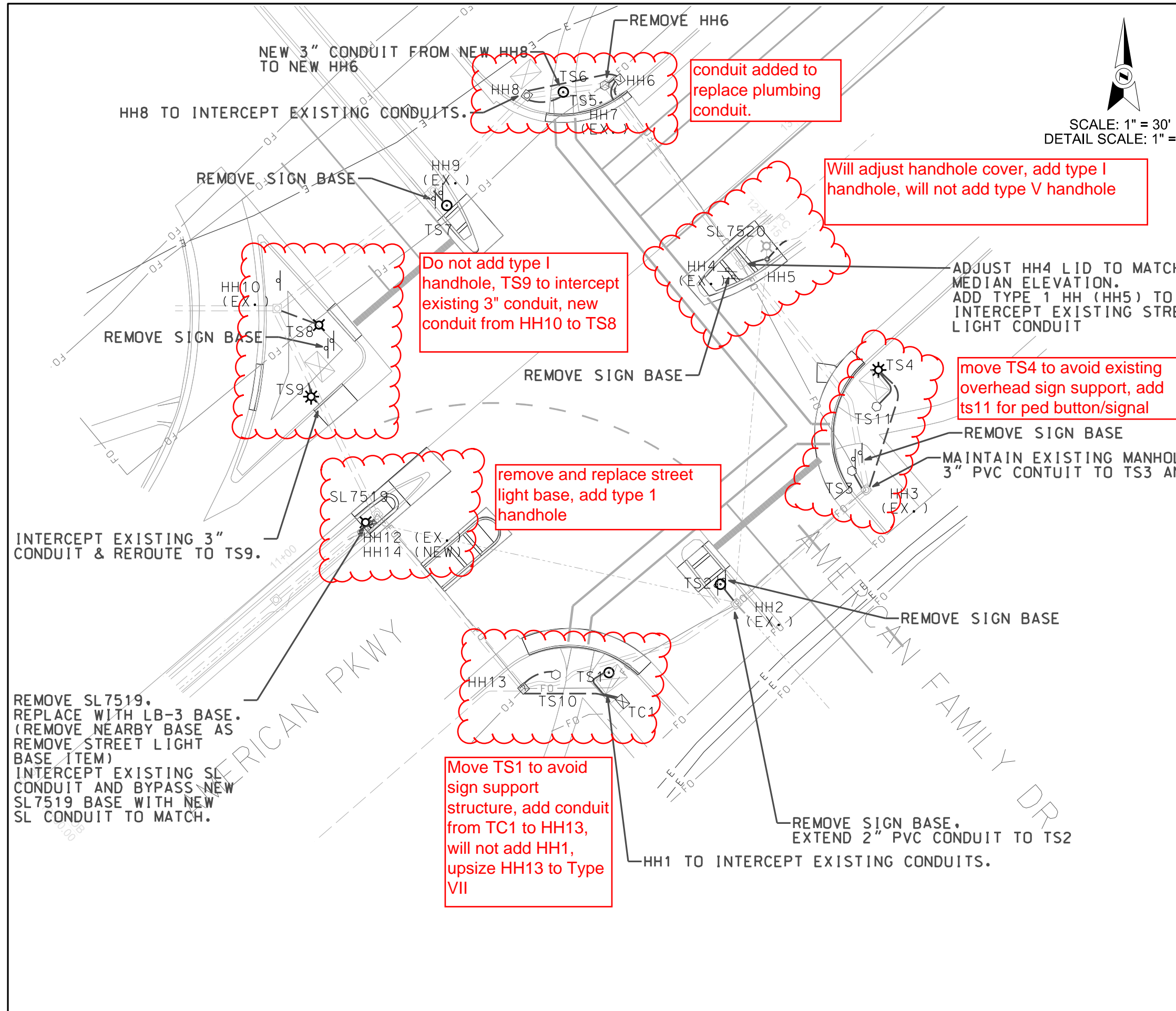
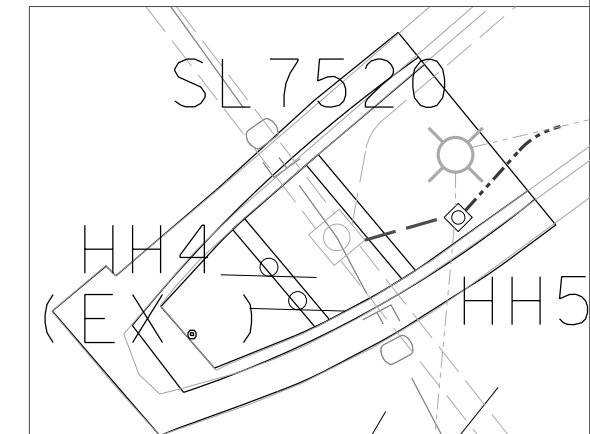
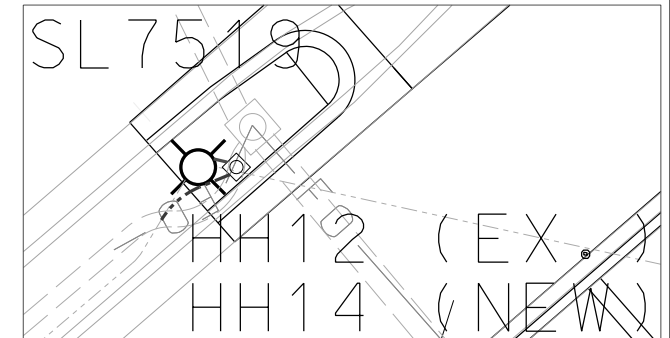
PLOT NAME:

REV. DATE:

ORIGINATOR: CITY OF MADISON, TRAFFIC ENG. DIV.



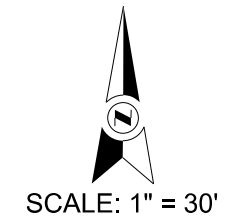
SCALE: 1" = 30'
 DETAIL SCALE: 1" = 12'



LEGEND

	INSTALL NEW TYPE P BASE
	INSTALL NEW TYPE G BASE
	INSTALL NEW LB-3 BASE
	INSTALL NEW LB-8 BASE
	INSTALL NEW TYPE 10 BASE
	INSTALL TYPE I HANDHOLE
	INSTALL TYPE V HANDHOLE
XX FT	MAST ARM (SIZE-TYPE)
	SIGNAL HEAD
	PEDESTRIAN SIGNAL HEAD
	FURNISH & INSTALL PVC CONDUIT
	EXISTING HANDHOLE
	EXISTING LB-3 BASE
	EXISTING CONDUIT
	EXISTING SIGN SUPPORT STRUCTURE

PLOT SCALE:
 PLOT NAME:
 REV. DATE:
 ORIGINATOR: CITY OF MADISON, TRAFFIC ENG. DIV.



SIGNAL NOTES:

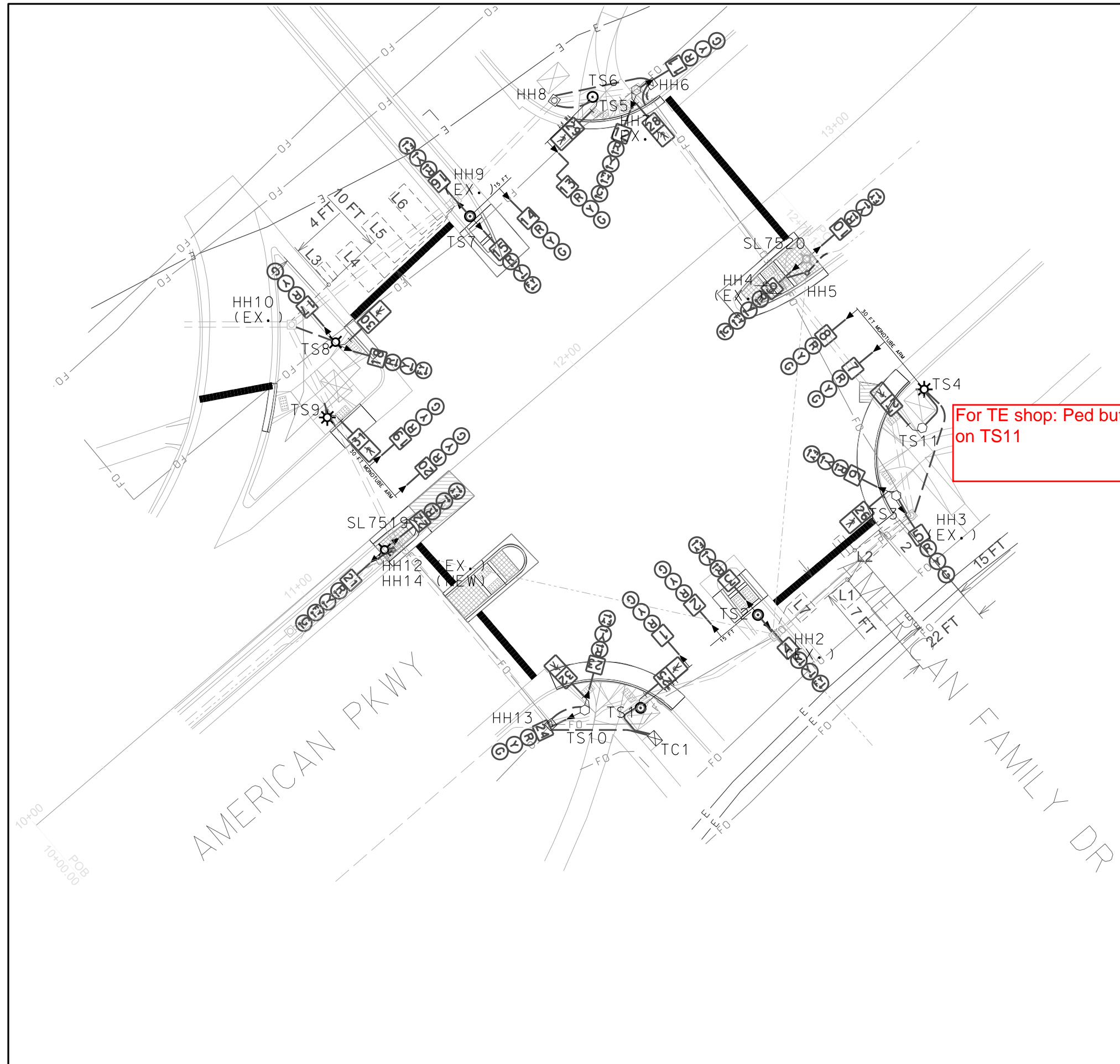
1. CUT IN LOOPS AT LOCATIONS SHOWN ON PLAN.
2. L1, L2, L3, L4, L5, L6, L8 SHALL BE LOCKING, CALLING PHASE 4 AND 8.
 L4: 3.5 FEET WEST OF MEDIAN CURB FACE, AT STOP BAR.
 L5: 15.5 FEET WEST OF MEDIAN CURB FACE, 1 FT BEHIND STOP BAR.
 L6: 27.5 FEET WEST OF MEDIAN CURB FACE, 2 FT BEHIND STOP BAR.
 L7: 3 FEET EAST OF MEDIAN CURB FACE, AT STOP BAR.
3. LOOPS L3 AND L2 SHALL HAVE BIKE LOOP DETECTOR PAVEMENT MARKINGS PAINTED DOWN CENTER OF LOOP AFTER INSTALLATION BY TRAFFIC ENGINEERING ELECTRICAL SHOP.

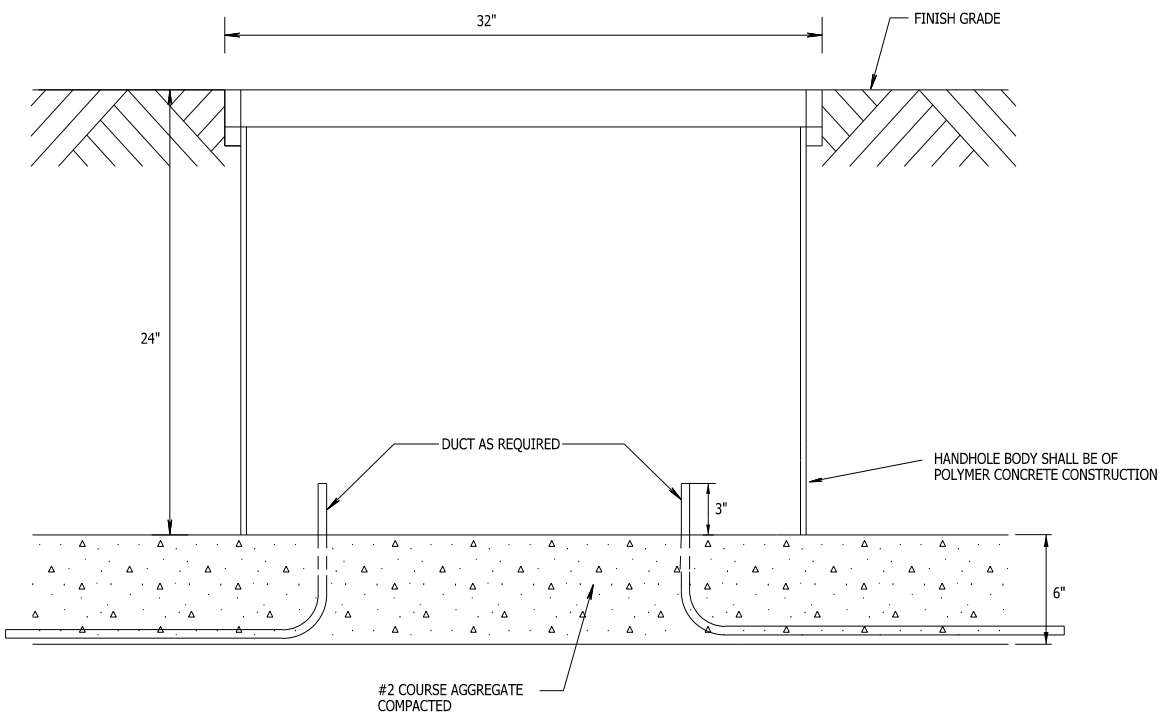
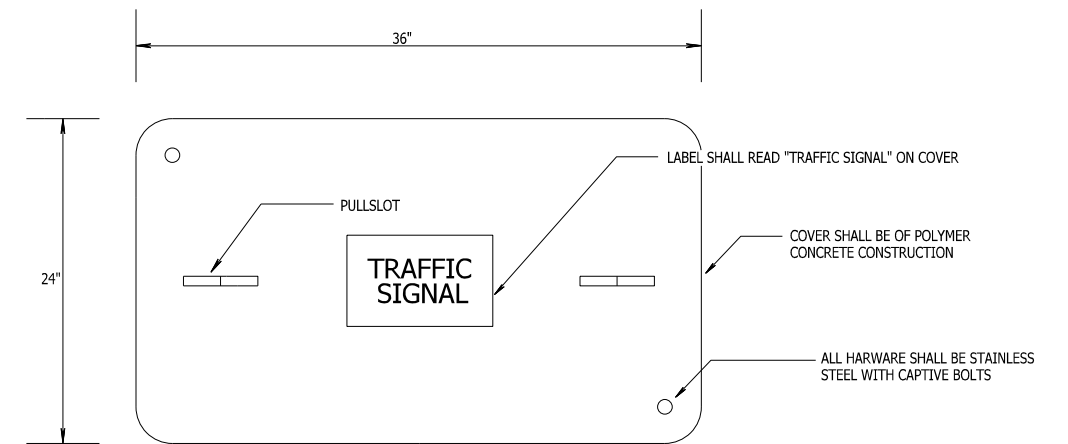
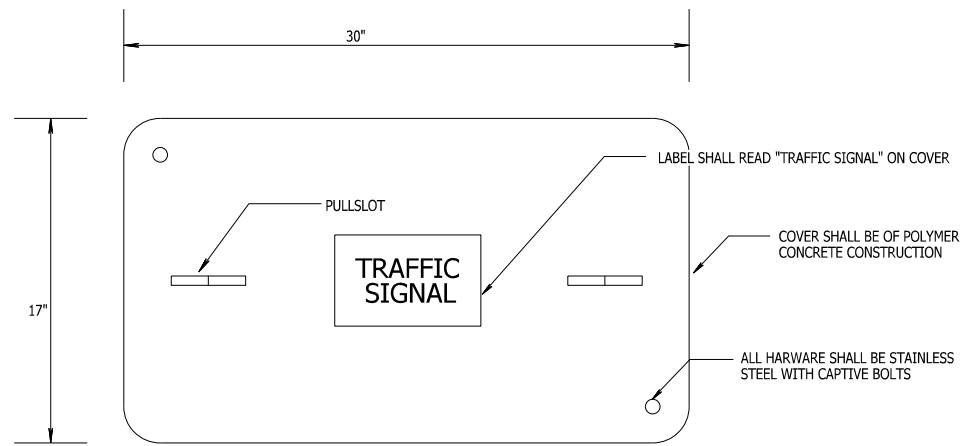
For TE shop: Ped buttons and signal heads now on TS11

FOR CITY OF MADISON TRAFFIC ENGINEERING SHOP USE ONLY

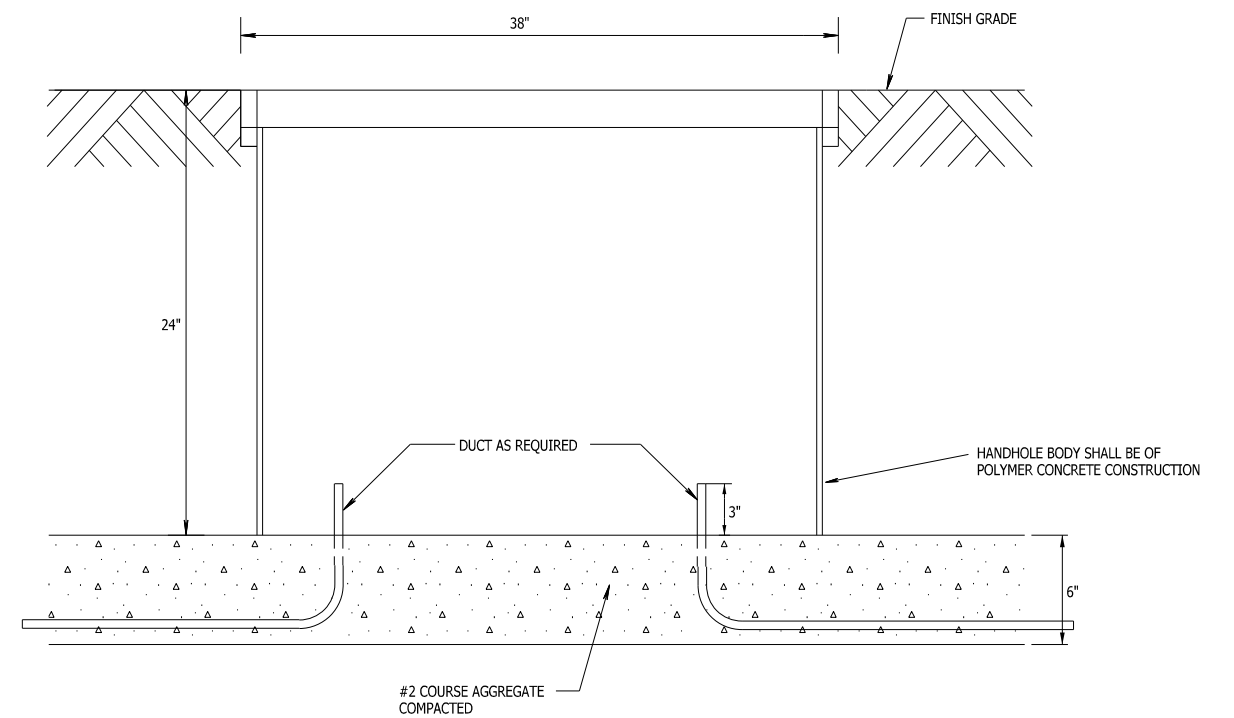
LEGEND	
	INSTALL NEW TYPE P BASE
	INSTALL NEW TYPE G BASE
	INSTALL NEW LB-3 BASE
	INSTALL NEW LB-8 BASE
	INSTALL NEW TYPE 10 BASE
	INSTALL TYPE I HANDHOLE
	INSTALL TYPE V HANDHOLE
XX FT	MAST ARM (SIZE-TYPE)
	SIGNAL HEAD
	PEDESTRIAN SIGNAL HEAD
	FURNISH & INSTALL PVC CONDUIT
	EXISTING HANDHOLE
	EXISTING LB-3 BASE
	EXISTING CONDUIT
	EXISTING SIGN SUPPORT STRUCTURE

PLOT SCALE:
 PLOT NAME:
 REV. DATE:
 ORIGINATOR: CITY OF MADISON, TRAFFIC ENG. DIV.





DETAIL: TYPE I HANDHOLE
SCALE: NONE



DETAIL: TYPE V HANDHOLE
SCALE: NONE

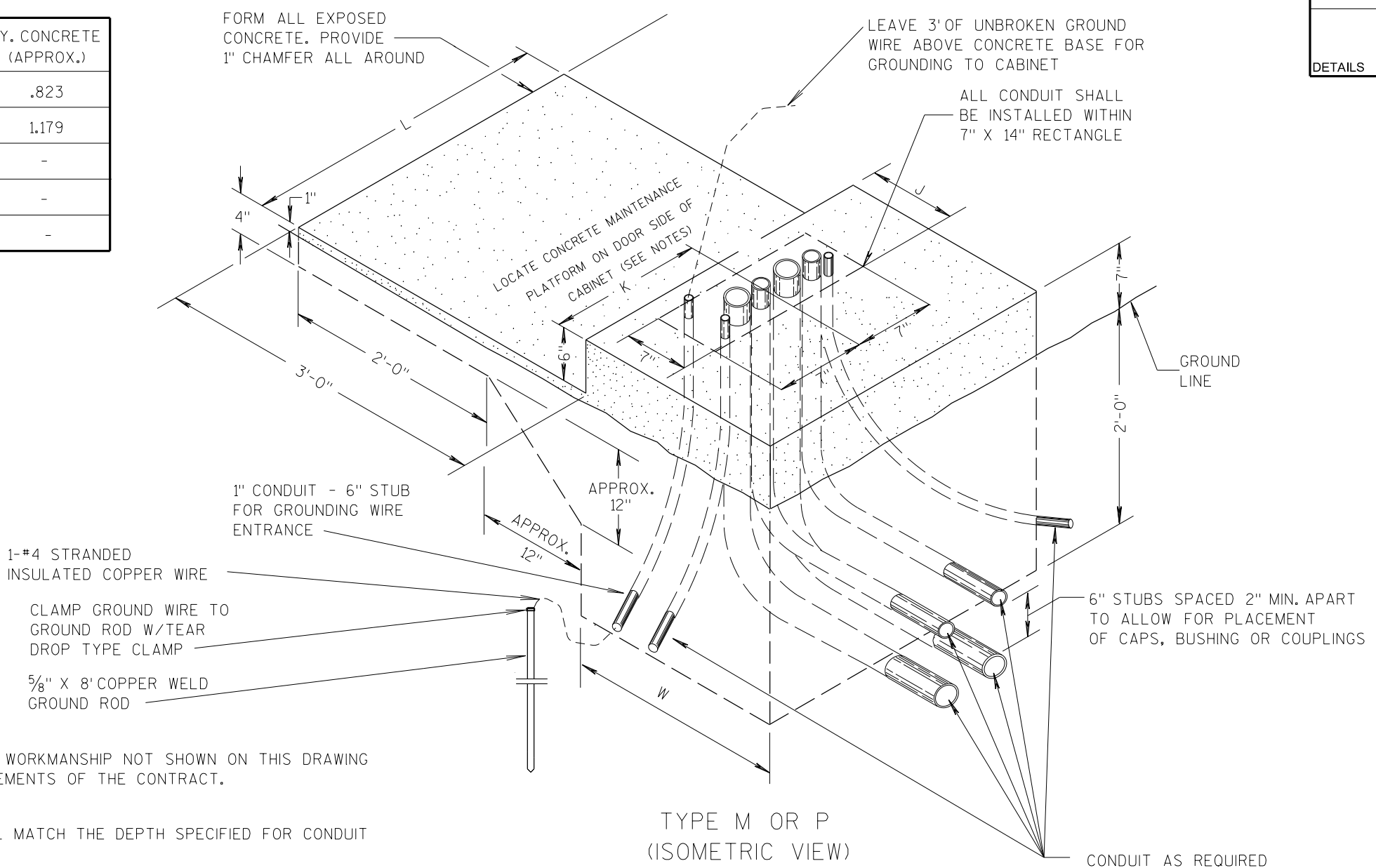
PLOT SCALE:

PLOT NAME:

REV. DATE:

ORIGINATOR: CITY OF MADISON, TRAFFIC ENG. DIV.

CONTROL CABINET BASE TYPE	DIMENSIONS				C.Y. CONCRETE (APPROX.)
	L	W	J	K	
TYPE M	40"	30"	12"	20"	.823
TYPE P	48"	30"	16"	24"	1.179
TYPE M MODIFIED	-	-	-	-	-
TYPE P MODIFIED	-	-	-	-	-
TYPE OTHER	-	-	-	-	-

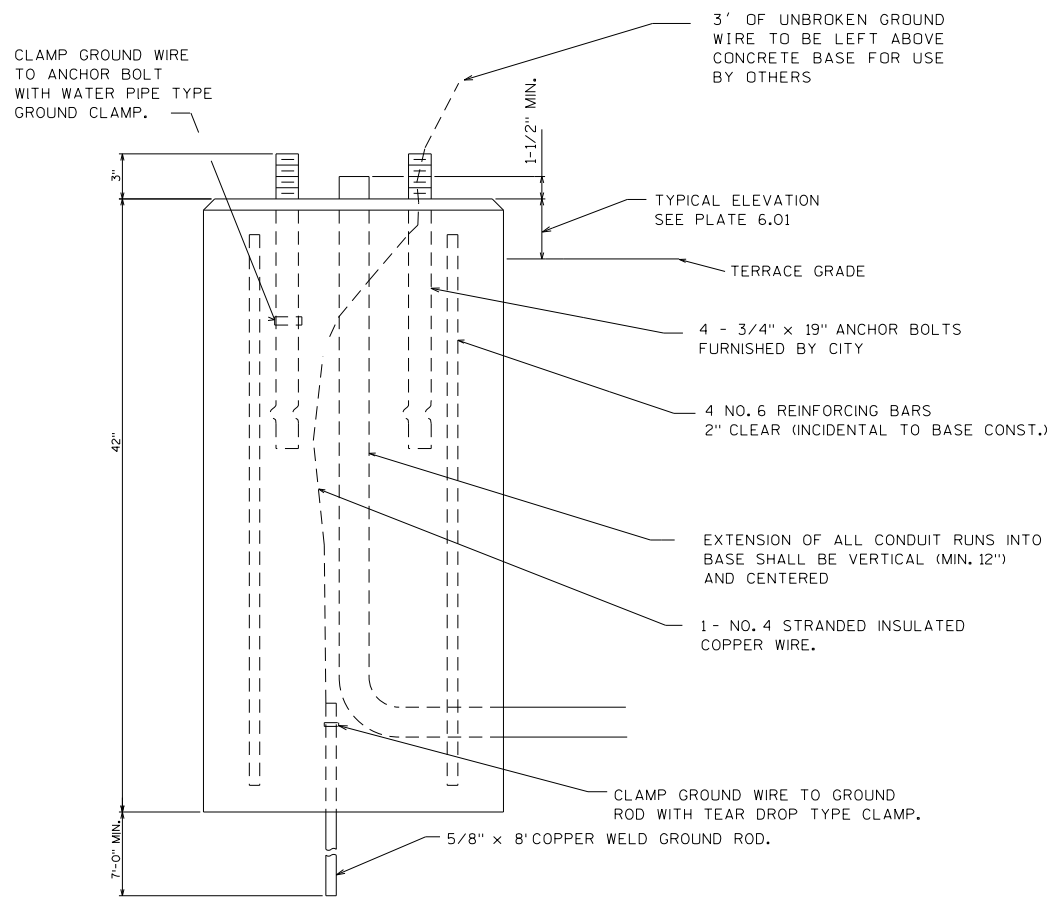
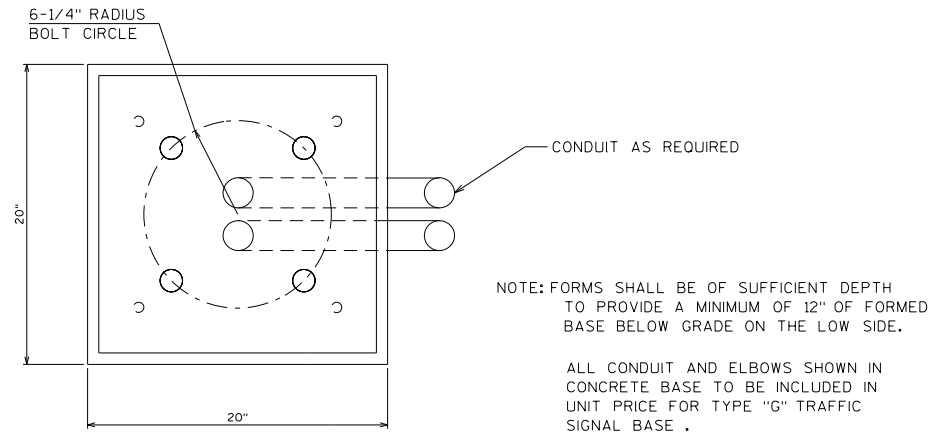


GENERAL NOTES

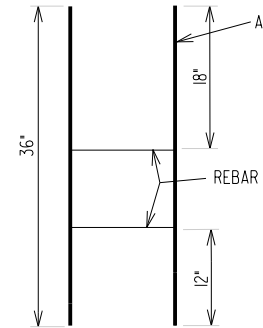
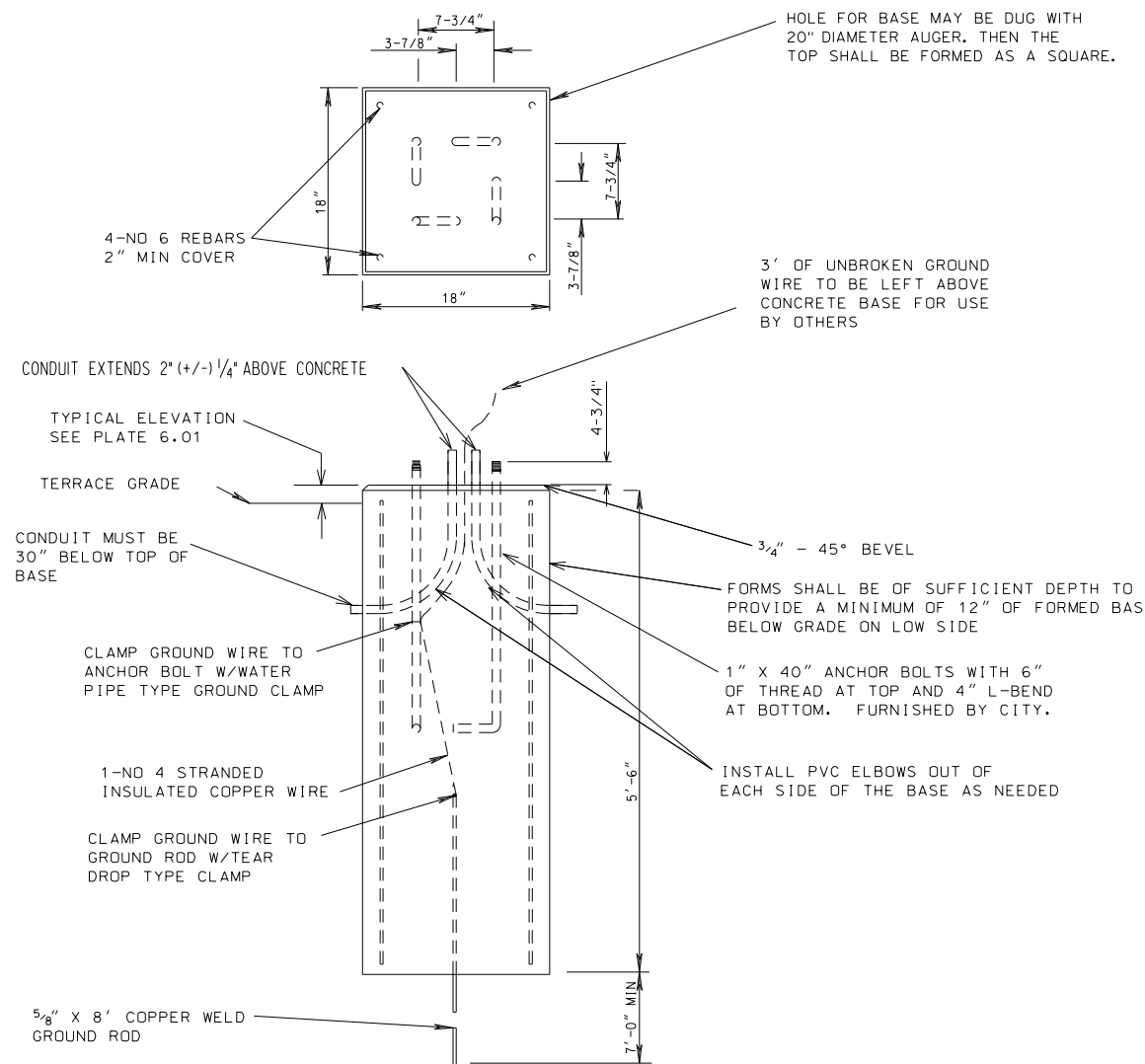
- DETAILS OF CONSTRUCTION, MATERIALS AND WORKMANSHIP NOT SHOWN ON THIS DRAWING SHALL CONFORM TO THE PERTINENT REQUIREMENTS OF THE CONTRACT.
- ALL CONDUIT SHALL BE PVC, SCHEDULE 40
- DEPTH OF CONDUIT EXITING THE BASE SHALL MATCH THE DEPTH SPECIFIED FOR CONDUIT INSTALLATION.
- ANY EXCEPTION TO THE MAXIMUM DEPTH SHALL BE ONLY WITH THE WRITTEN APPROVAL OF THE ENGINEER.
- CONTROL CABINET BASE TOP SURFACES SHALL BE TROWEL FINISHED AND LEVEL.
- MAINTENANCE PLATFORM SHALL NOT BE INSTALLED WHEN THE SURROUNDING AREA IS PAVED.
- MINIMUM BENDING RADIUS OF CONDUIT = 6 X THE DIAMETER.
- ALL CONDUIT ENDS AT THE TOP OF CONCRETE BASES SHALL BE CAPPED OR PLUGGED IMMEDIATELY AFTER PLACEMENT AND BEFORE CONCRETE IS POURED. CONDUITS IN WHICH WIRE OR CABLE IS NOT BEING INSTALLED SHALL REMAIN CAPPED OR PLUGGED.
- CONCRETE FORM DEPTH BELOW FINISHED GRADE SHALL BE 6" MINIMUM. CONCRETE FORMS SHALL BE REMOVED AFTER CONCRETE HAS SET.
- CONDUITS SHALL EXIT THE BASE IN THE DIRECTION OF THE STRUCTURE IT IS TERMINATING INTO.
- MAINTENANCE PLATFORM SIZE MAY VARY ON ACCOUNT OF CONDITIONS. VERIFY THE MAINTENANCE PLATFORM SIZE WITH ENGINEER PRIOR TO POURING BASE.

CONCRETE CONTROL CABINET BASES

PLOT SCALE:
 PLOT NAME:
 REV. DATE:
 ORIGINATOR: CITY OF MADISON, TRAFFIC ENG. DIV.



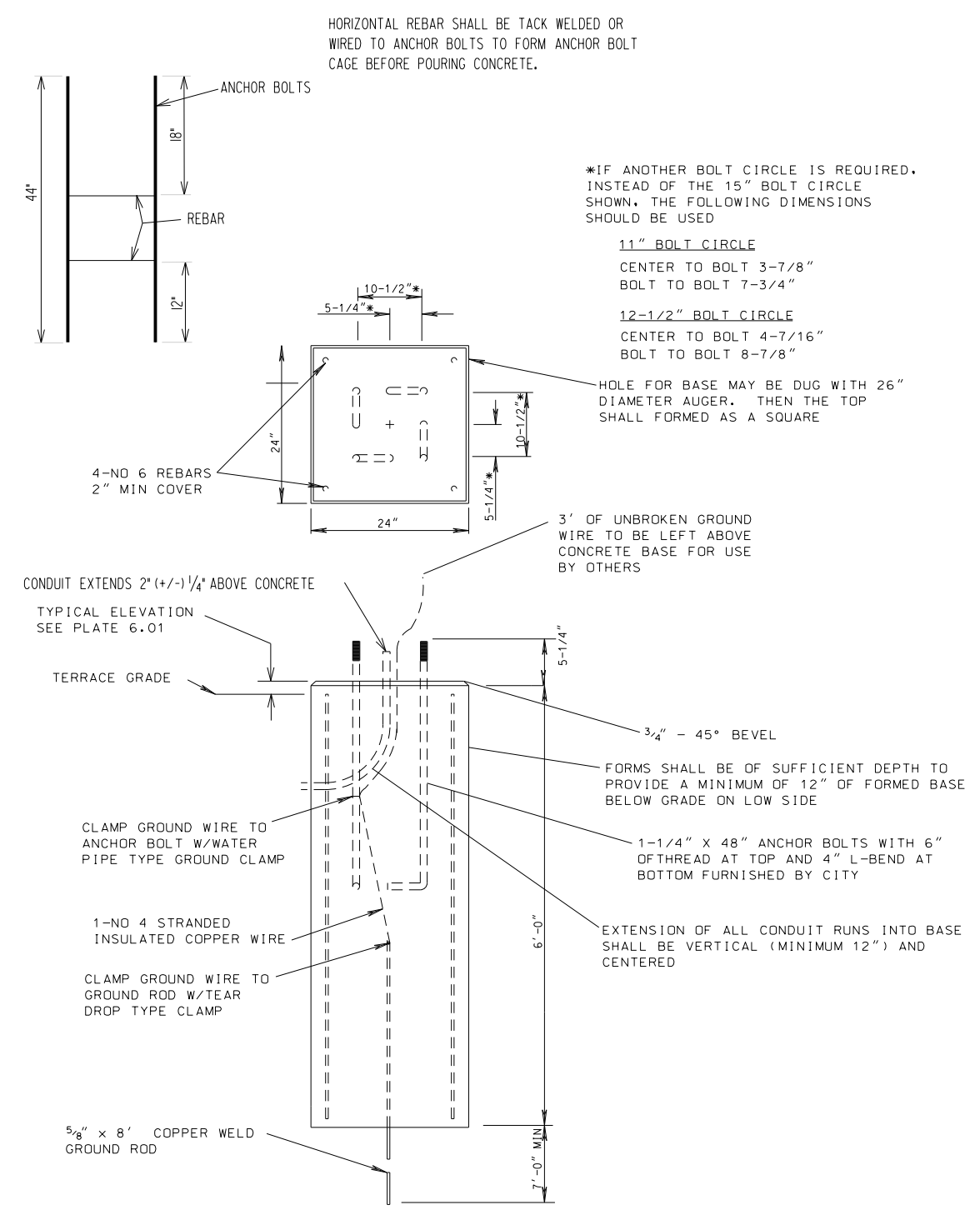
DETAIL: TYPE G BASE
 SCALE: NONE



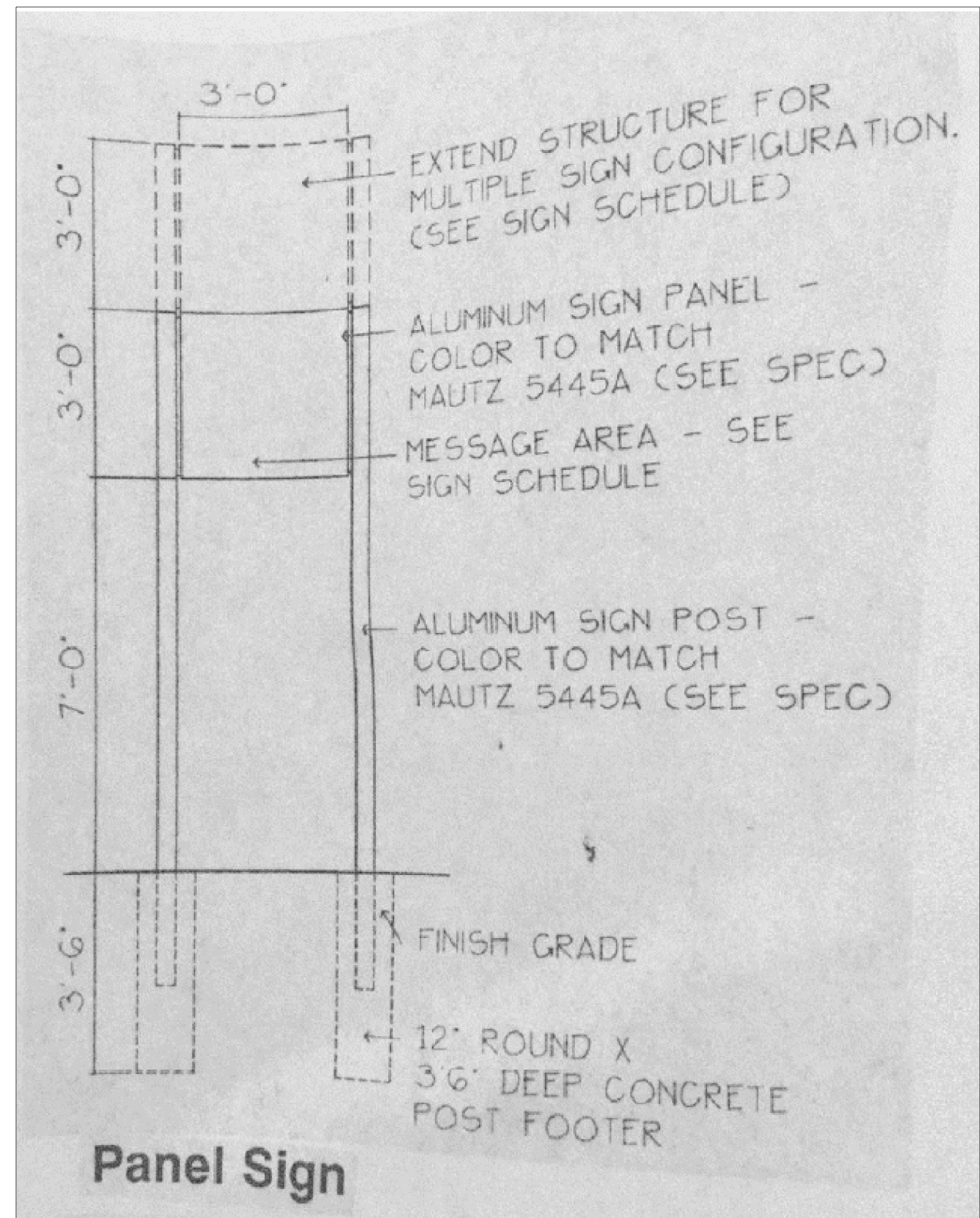
HORIZONTAL REBAR SHALL BE TACK WELDED OR WIRED TO ANCHOR BOLTS TO FORM ANCHOR BOLT CAGE BEFORE POURING CONCRETE.

DETAIL: LB-3 BASE
 SCALE: NONE

PLOT SCALE:
 PLOT NAME:
 REV. DATE:
 ORIGINATOR: CITY OF MADISON, TRAFFIC ENG. DIV.



DETAIL: TYPE LB-8 BASE
 SCALE: NONE



DETAIL: REMOVE SIGN BASE
 SCALE: NONE

PLOT SCALE:

PLOT NAME:

REV. DATE:

ORIGINATOR: CITY OF MADISON, TRAFFIC ENG. DIV.

ELECTRICAL HANDHOLES (45865)

CATEGORY DESCRIPTION	STATION	OFFSET	60427 REMOVE ELECTRICAL HANDHOLE EACH	60702 CONSTRUCT ELECTRICAL HANDHOLE TYPE I EACH	60706 CONSTRUCT ELECTRICAL HANDHOLE TYPE V EACH	60708 CONSTRUCT ELECTRICAL HANDHOLE TYPE VII EACH	COMMENTS
0030/0040	HH1	11+48.8	90' R	-	-	-	[REMOVED ITEM]
	HH2	11+93.4	95' R	-	-	-	MAINTAIN EXISTING HANDHOLE
	HH3	12+44.8	94' R	-	-	-	MAINTAIN EXISTING HANDHOLE
	HH4	12+60.4	19' R	-	-	-	[ADJUST INLET]
	HH5	12+67	23' R	-	1	-	[CHANGED TYPE V TO TYPE I]
	HH6	12+68.3	46' L	-	-	1	
	HH7	12+64.2	47.6' L	1	-	-	REMOVE, RELOCATE
	HH8	12+44.4	60' L	-	1	-	INTERCEPT EXISTING CONDUITS
	HH9	12+04.8	57' L	-	-	-	MAINTAIN EXISTING HANDHOLE
	HH10	11+46.8	60.5' L	-	-	-	MAINTAIN EXISTING HANDHOLE
	HH11	11+51	33' L	-	-	-	[REMOVED ITEM]
	HH12	11+29.6	5' R	-	-	-	MAINTAIN EXISTING HANDHOLE
	HH13	11+29.0	73' R	1	-	1	MAINTAIN EXISTING HANDHOLE
	HH14	11+33.7	6.5' R	-	1	-	[ADD TYPE I HH]
PROJECT 45865 TOTALS			2	2	1	1	

HH1 was removed, Type VII added to HH13

TRAFFIC SIGNAL CONDUIT (45865)

FURNISH AND INSTALL

CATEGORY	FROM	TO	60221 3 INCH PVC (SCH 80) CONDUIT BY OPEN TRENCH LF	60222 3 INCH PVC (SCH 80) CONDUIT LF	60223 3 INCH PVC (SCH 40) CONDUIT BY OPEN TRENCH LF	60224 3 INCH PVC (SCH 40) CONDUIT LF	60225 2 1/2 INCH (SCH 80) CONDUIT BY OPEN TRENCH LF	60229 2 INCH PVC (SCH 80) CONDUIT BY OPEN TRENCH LF	60231 2 INCH PVC (SCH 40) CONDUIT BY OPEN TRENCH LF	60232 2 INCH PVC (SCH 40) CONDUIT LF	60241 GOPHR RACEWAY FOR ELECTRICAL CONDUIT OR CABLE-IN-DUCT L.F	COMMENTS
0040	TC1	HH13	-	-	30	30	-	-	-	-	-	(2) - 3"
	TC1	TS1	-	-	15	-	-	-	-	-	-	(1) - 3"
	HH2	TS2	-	-	-	-	-	8	-	-	-	(1) - 2"
	HH3	TS3	-	-	-	-	-	8	-	-	-	(1) - 2"
	HH3	TS4	-	-	40	-	-	-	-	-	-	(1) - 3"
	HH5	HH4	12	-	6	-	12	-	-	-	-	MATCH EXISTING CONDUIT
	HH5	EXISTING SL	-	-	-	-	12	-	-	-	-	MATCH EXISTING CONDUIT
	HH6	EXISTING	7	-	-	-	6	-	-	-	-	(1) - 3"
	HH6	TS5	-	-	5	-	-	-	-	-	-	(1) - 2"
	HH6	HH8	-	-	28	-	-	-	-	-	-	(1) - 3"
	HH8	TS6	-	-	12	-	-	-	-	-	-	(1) - 3"
	HH9	TS7	-	-	-	-	-	6	-	-	-	(1) - 2"
	HH10	TS8	-	-	14	-	-	-	-	-	-	(1) - 3"
	TS9	EXISTING	-	-	12	-	-	-	-	-	-	MATCH EXISTING CONDUIT
	HH13	EXISTING	-	-	-	-	6	-	-	-	-	MATCH EXISTING CONDUIT
	HH13	SL7519	-	-	4	-	-	-	-	-	-	(1) - 3"
	HH13	TS10	-	-	-	-	-	12	-	-	-	(1) - 2"
	UNDISTRIBUTED		-	-	-	-	-	-	-	-	65	UNDISTRIBUTED
	EXISTING SL	EXISTING SL	-	-	-	-	-	8	-	-	-	
	HH5	SL7520	-	-	6	-	-	-	-	-	-	
	TS4	TS11	-	-	-	-	-	14	-	-	-	(1) - 2"
	HH12	HH14	-	-	-	10	-	-	-	-	-	(1) - 3"
PROJECT 45865 TOTALS			19	0	172	40	36	0	56	0	65	

PLOT SCALE:

PLOT NAME:

REV. DATE:

ORIGINATOR: CITY OF MADISON, TRAFFIC ENG. DIV.

TRAFFIC SIGNAL BASES (45865)

CATEGORY	DESCRIPTION	STATION	OFFSET	60413 CONCRETE BASE TYPE P EACH	60411 CONCRETE BASE TYPE G EACH	60403 CONCRETE BASE TYPE LB-3 EACH	60407 CONCRETE BASE TYPE LB-8 EACH	60409 CONSTRUCTION OFFSET BASE EACH	60421 REMOVE STREET LIGHT BASE EACH	90100 CONCRETE BASES TYPE 10 EACH	90101 REMOVE SIGN BASE EACH	COMMENTS
0100	TC1	11+48.8	95' R	1	-	-	-	-	-	-	-	
	TS1	11+50.4	85' R	-	-	-	1	-	-	-	-	
	TS2	11+93.6	85.6' R	-	-	-	1	-	-	-	-	
	TS3	12+45.5	86' R	-	1	-	-	-	-	-	-	
	TS4	12+62.4	70' R	-	-	-	-	-	-	1	-	
	SL7520	12+69.4	50' R	-	-	-	-	-	-	-	-	
	TS5	12+64.2	47.5' R	-	1	-	-	-	-	-	-	
	TS6	12+53.2	54' L	-	-	-	1	-	-	-	-	
	TS7	12+05.0	51' L	-	-	-	1	-	-	-	-	
	TS8	11+53.0	48.7' L	-	-	1	-	-	-	-	-	
	TS9	11+37.4	34' L	-	-	-	-	-	-	1	-	
	SL7519	11+35.9	5.1' R	-	-	1	-	-	1	-	-	
	TS10	11+39.2	75.7'R	-	1	-	-	-	-	-	-	
	TS11	12+63.1	77.5' R	-	1	-	-	-	-	-	-	
	UNDISTRIBUTED			-	-	1	-	1	1	-	5	UNDISTRIBUTED
PROJECT 45865 TOTALS				1	4	3	4	1	2	2	5	

PLOT SCALE:
 PLOT NAME:
 REV. DATE:
 ORIGINATOR: CITY OF MADISON, TRAFFIC ENG. DIV.



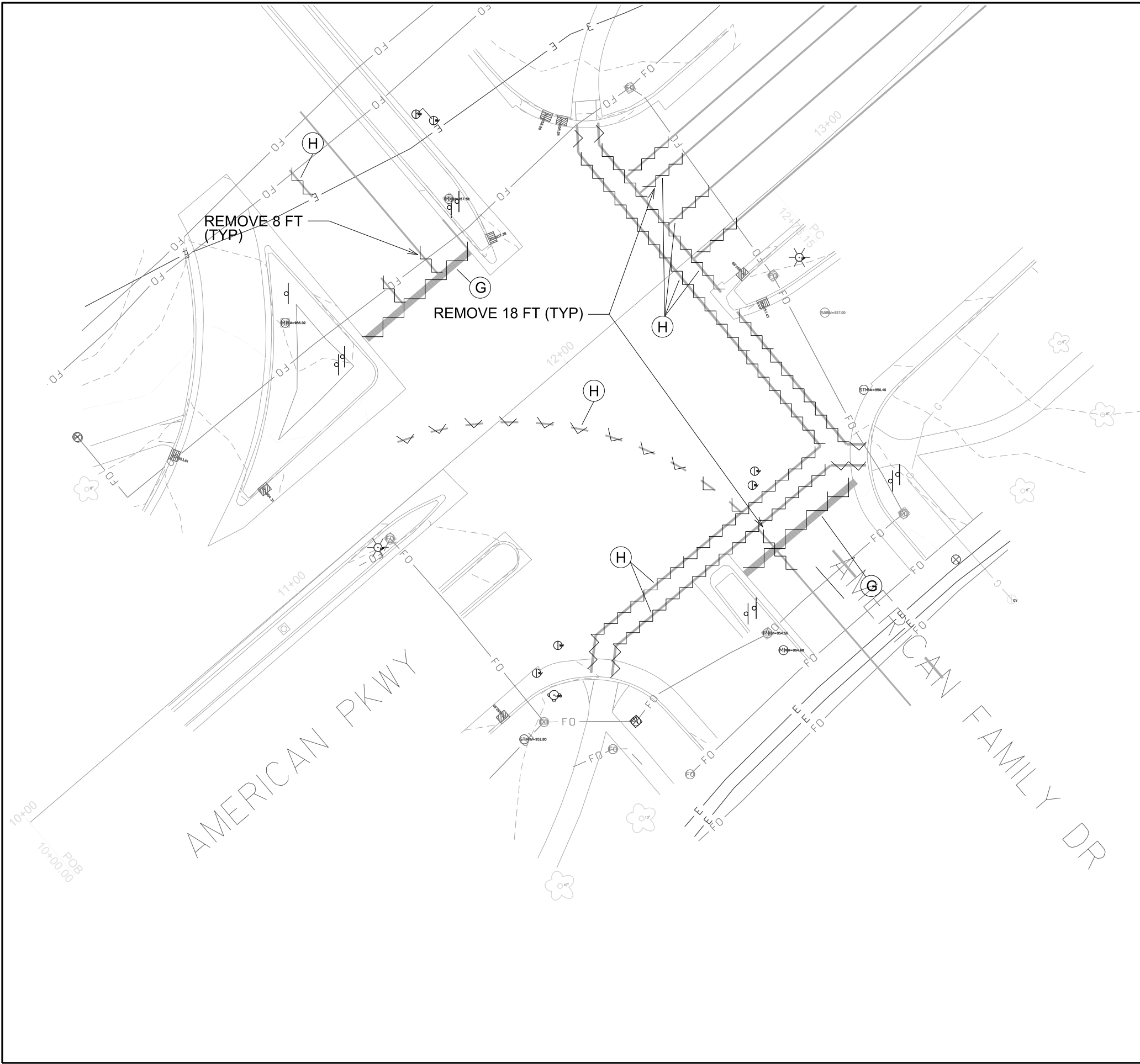
SCALE: 1" = 30'

PLOT SCALE:

PLOT NAME:

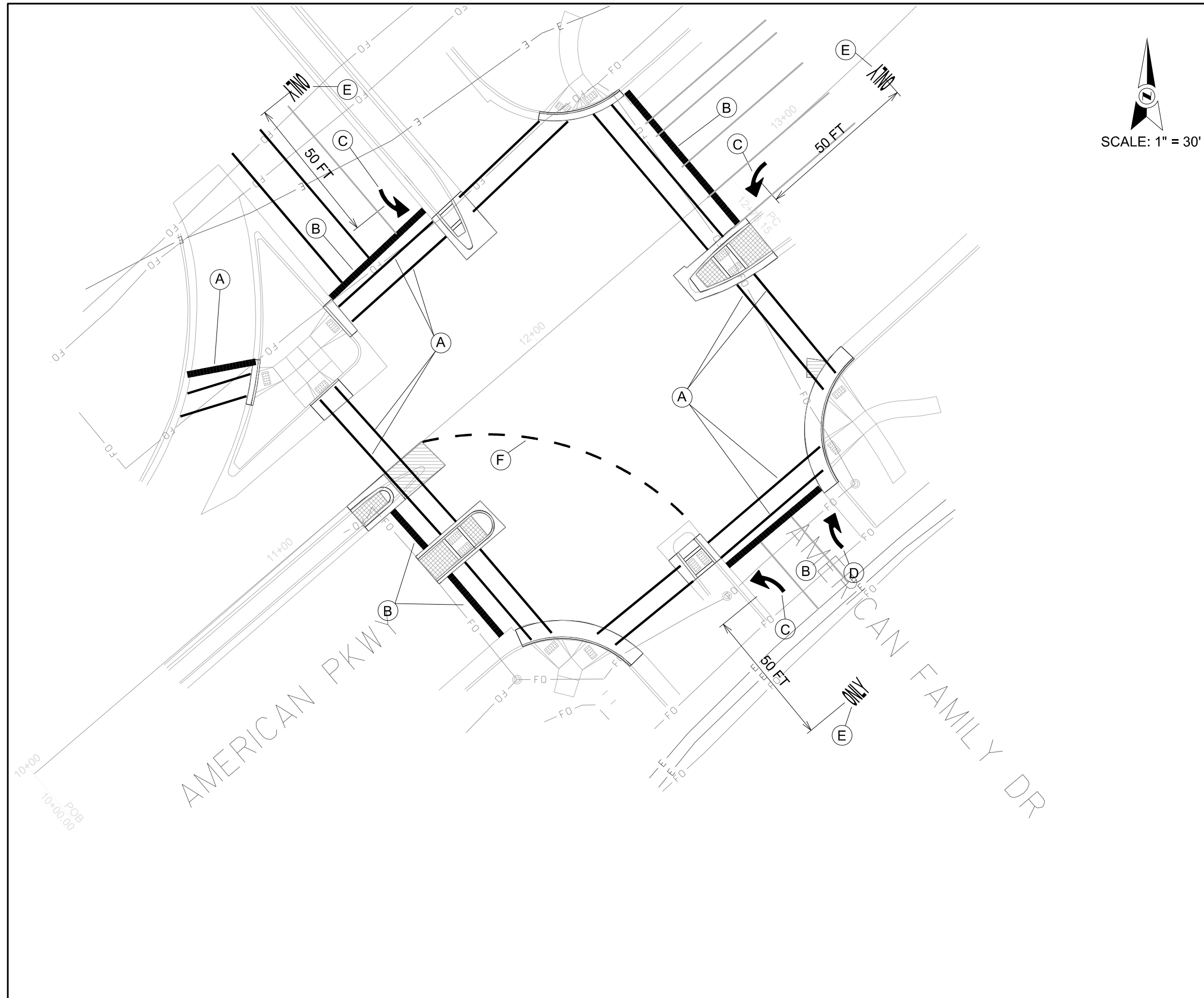
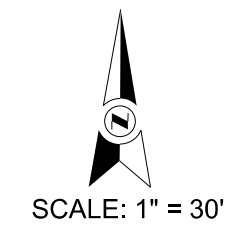
REV. DATE:

ORIGINATOR: CITY OF MADISON, TRAFFIC ENG. DIV.



LEGEND

- (A) CROSSWALK, 6-INCH
- (B) STOP LINE, 24-INCH
- (C) SYMBOL, LEFT ARROW
- (D) SYMBOL, RIGHT ARROW
- (E) WORD, ONLY
- (F) RADIUS LINE, 4-INCH (5' LINE, 5' GAP)
- (G) PAVEMENT MARKING REMOVAL, 24-INCH
- (H) PAVEMENT MARKING REMOVAL, 4-INCH



LEGEND

(A)	CROSSWALK, 6-INCH
(B)	STOP LINE, 24-INCH
(C)	SYMBOL, LEFT ARROW
(D)	SYMBOL, RIGHT ARROW
(E)	WORD, ONLY
(F)	RADIUS LINE, 4-INCH (5' LINE, 5' GAP)
(G)	PAVEMENT MARKING REMOVAL, 24-INCH
(H)	PAVEMENT MARKING REMOVAL, 4-INCH

PLOT SCALE:
 PLOT NAME:
 REV. DATE:
 ORIGINATOR: CITY OF MADISON, TRAFFIC ENG. DIV.